

NATIONAL INSTITUTE OF TECHNOLOGY KARNATAKA, SURATHKAL

Mangaluru - 575025, (D.K), Karnataka State



INFORMATION BULLETIN

**Admission to M.Tech. (Research) and Ph.D. Programmes
2025-26 (Winter Session)**

Website: www.nitk.ac.in
Phone : (91-824) 2474000-2474023

Email::deanacademic@nitk.edu.in
Fax : 91-824-2474033

Contents

1 General

1.1	About the Institute	1
1.2	Location	1
1.3	Self- contained campus	2
1.4	Computing and communication facilities	2
1.5	Library Facilities	3
1.6	Disciplines of Study	3

2 M.Tech. (R) Admissions

2.1	Flow chart for M.Tech.(R) admissions	4
2.2	Guidelines for M.Tech./ M.Tech. (R) admissions	4
A	Minimum qualification/Eligibility for M.Tech. (R) admissions	5
B	List of post graduate programmes in Engineering	5
C	Qualifying Examinations for M. Tech. (R) admissions	7

3 Ph.D. Admissions

3.1	Flow chart for Ph.D. Admissions	11
3.2	Guidelines for Ph.D. Admissions	12
A	Scholarship seats	12
B	Non-Scholarship seats	12
C	Minimum qualification/Eligibility	13
D	Specializations in Ph.D. Programme	14
E	Qualifying Examinations for Ph.D.	16

4 Selection Procedure

B	M.Tech. (R)	16
E	Ph. D.	16

5 How to apply 17

6 Calendar of Events for Admission to M.Tech. (Research) and Ph.D. Programmes (2025-26) 17

7 Intake for M.Tech (Research) and Ph.D. Programmes

A	Intake for M. Tech (Research) for 2025-26	18
B	Intake for Ph.D. Programme for 2025-26: Full time under Institute's Scholarship	18

8 Documents to be produced

A	At the time of counselling/written test/interview	18
B	Documents to be submitted at the time of admission	19

9 Financial Assistance

A	M. Tech. (R) Programmes	20
B	Ph.D. Programme	20
C	Sponsored Candidates	21

10 Fees and Deposits

A	Fee structure for M.Tech. (R) programmes for the year 2025-26	21
B	Fee structure for Ph.D. programme for the year 2025-26	22
C	Fee structure for the internal Regular Faculty /Staff for Ph.D. programme. (Only for regular staff of the Institute) for the year 2025-26	22
D	Provisional Mess Fees (At Hostel Office) for Hostellers (first semester) for the year 2025-26	23

NATIONAL INSTITUTE OF TECHNOLOGY KARNATAKA, SURATHKAL

1. General

1.1 About the Institute

The National Institute of Technology Karnataka (NITK), Surathkal is a prestigious top ranked Institute in India, with a rich history dating back to 1960. The Institute is declared as Institute of national importance by the government of India as per the NIT act 2007 and is governed by the rules and statutes of the NIT Act, which indicates its affiliation with the national-level framework set for technical education institutions in India.

The institute has played a significant role in providing quality technical education and fostering research and development over the years and contributed significantly to the advancement of knowledge and technology. Institute has maintained a long-standing tradition of research spanning both conventional and modern areas of engineering and sciences across all the departments. The active involvement in application-oriented research to address societal challenges with a range of focus areas such as environment, water resources, materials, rock mechanics, manufacturing, new structures, VLSI, power electronics, biomedical, machine learning and artificial intelligence reflects a holistic and forward-thinking approach and highlights a diverse and comprehensive approach to research. With this kind of research, the Institute contributes not only to the academic and scientific community but also directly benefits society by addressing real-world issues.

NITK has a robust and inclusive admission process, attracting a diverse pool of students both nationally and internationally. The use of standardized entrance exams like JEE Mains for B.Tech., GATE for M.Tech., CAT/MAT/GATE for MBA, and JAM for M.Sc. reflects a commitment to a merit-based selection process. The inclusion of foreign students through exchange programmes, Ministry of External Affairs (MEA), Indian Council for Cultural Relations (ICCR), and the Direct Admission to Students Abroad (DASA) scheme adds to the Institute's global perspective and fosters cultural diversity. The availability of scholarship seats for M.Tech. programmes based on GATE scores, as well as the provision for sponsored students, showcases a commitment to supporting academic excellence and providing opportunities to deserving candidates. Additionally, the focus on self-financed categories for M.Tech, M.Sc. and MBA programmes demonstrates the Institute's flexibility in accommodating a broader range of students. The Institute's emphasis on doctoral programmes, including admitting candidates with Institute fellowships and external sponsored candidates, speaks to its dedication to advanced research and academic excellence. The strong placement record is a testament to the quality of education and training provided by NITK, as evidenced by the high demand for its graduates in top industries and companies. This recognition as one of the best institutions in the country for student placements further underscores the Institute's commitment to producing well-rounded and highly employable graduates.

1.2. Location

NITK is located in Surathkal of Mangalore City, Dakshina Kannada district, Karnataka, India. It is situated along the Kanyakumari-Mumbai National Highway 66. Mangalore, also known as Mangaluru, is a coastal city in the southwestern part of Karnataka, and NITK is positioned in the outskirts of this city with a campus set amid 300 acres of lush green surroundings with the Western Ghat Mountains to the east and the Arabian sea to the west. With a temperature range of 18 to 38 degrees Celsius, the location has a fairly moderate and pleasant climate throughout the year and the fact that the campus is situated on the sea shore adds an extra element of appeal with a refreshing and healthy climate. This location provides not only a peaceful and conducive environment for academic activities but also convenient connectivity to major cities in India and international destinations via road, rail, and air. The National Highway 66 is a major artery that runs along the western coast of India, facilitating easy travel to and from major cities. The presence of the Mangalore Railway Station, located about 20 km away from the campus, ensures convenient rail access. Additionally, the Surathkal Railway Station being approximately 3 km away further enhances the connectivity for the NITK community. The Mangalore

(Bajpe) airport being in close proximity, about 30 km away, adds to the ease of transportation. This airport serves as a vital link for both domestic and international destinations, making it convenient for students, faculty, and visitors to travel. This comprehensive connectivity by road, rail, and air not only facilitates the movement of individuals associated with the Institute but also supports collaborative activities, academic exchange programmes, and other engagements with institutions and professionals both nationally and internationally.

1.3. Self- contained campus

NITK provides a comprehensive and well-equipped residential campus with an environment that can significantly contribute to the overall development by providing not just academic facilities but also fostering a sense of community, social interactions, and a balanced lifestyle. There are 13 hostel blocks for boys and 6 blocks for girls with accommodation capacity of about 5500 boys and 1200 girl students and with independent messes of various types catering to diverse tastes. The availability of a good number of faculty quarters on campus contributes to a strong sense of community and a diverse and dynamic campus culture enhancing the overall experience for students.

There are ample opportunities for both outdoor and indoor games furnishing to a diverse and well-rounded approach to sports and recreational activities on campus, indicating a commitment to promote physical health, team spirit, and a holistic approach. Additionally, availability of swimming pool and a gymnasium facility on the campus underscores the Institute's commitment to promoting fitness and overall well-being among its students. Inclusion of N.C.C. and N.S.S. as prominent extracurricular activities reflects a commitment to holistic education, focusing on the development of leadership qualities, social responsibility, and active community involvement among the students. The Institute supports a host of activities through various clubs such as music, photography, web enthusiast and dramatic etc., enhancing the overall campus experience, promoting a well-rounded education that goes beyond academic learning.

A central library provided to meet the academic needs of students and faculty serves as a resource hub, offering a diverse collection of books, journals, and other academic materials. The well-equipped health care center ensures the necessary medical support and services for students and faculty, and plays a pivotal role in creating a campus environment that prioritizes the health and well-being of the community. The branches of State Bank of India and Canara Bank, along with ATM facilities, offer convenient banking services for the campus community and the presence of post office enhances the overall accessibility and convenience for communication needs. Two canteens cater to the culinary needs of the residents.

1.4. Computing and Communication facilities

NITK has implemented a campus-wide network that spans all areas, including academic buildings, guest houses, student hostels, and campus residences. The campus backbone services are provided through approximately 20 kilometers of 12/24 core Optical Fiber Cable (OFC). The backbone supports varying speeds, including 1 Gbps and 10 Gbps connections to different buildings. Broadband connectivity is extended to campus residences, providing high-speed internet access to residents. Different entities on the campus, including departments, residences, directorate, administrative blocks, guest houses, and hostels, are individually connected to the core switch. Hostel blocks are integrated into the academic blocks of NITK, allowing for seamless connectivity and sharing of internet bandwidth across the Institute. The Institute ensures round-the-clock internet connectivity, providing students, faculty, and staff with continuous access to online resources and services. Journals subscribed through the INDEST consortium are available throughout the campus LAN, ensuring that academic resources are easily accessible to the entire campus community. This detailed network infrastructure enhances communication, collaboration, and access to information across the campus. The emphasis on high-speed connectivity, integration of networks, and access to academic resources reflects a commitment to providing a technologically advanced and well-connected environment for both academic and residential aspects of campus life.

In order to support seamless migration of connectivity between access points for users, approximately 1000 indoor access points and 40 outdoor access points are deployed via Wi-Fi network which is an

extension of the wired networks. The NITK data centre serves as an integration hub for Optical Fiber Cable (OFC)/backbone infrastructure housing internet connections to Bharat Sanchar Nigam Limited (BSNL) and the national knowledge network. The centre is equipped with networking hardware to facilitate efficient data transfer and communication across the entire network. This ensures that the Institute has reliable and redundant connections to the internet, catering to the diverse needs of academic, research, and administrative activities. Main servers are connected to the data centre network. The Center for Computational Computing (CCC) utilizes virtualization with the Proxmox virtualization environment and Ubuntu system containerization environment. CCC hosts a campus-wide license for MATLAB, Simulink, and companion products. Faculty, researchers, and students at NITK have the flexibility to download and install products like MATLAB, Simulink, and companion products which contributes to a more versatile and accessible computing environment for the academic community.

1.5. Library Facilities

Central Library at NITK Surathkal serves as a vital hub for academic and research activities, playing a key role in fostering an environment of learning, exploration, and knowledge dissemination. With a rich collection of 1.5 lakh print materials, including reference books, textbooks, CDs, etc., the library provides a diverse range of resources covering Engineering, Science, Social Sciences, Humanities, and Management. The library subscribes to a core collection of print journals (100 plus) and an extensive range of electronic resources. The electronic resources include e-journals (12045), e-databases (25), and e-books (11202), providing a wealth of information in digital formats. The library is a core member of e-ShodhSindu, a Consortia for Higher Education E-Resources. This consortium provides access to over 10,000 qualitative electronic resources, including full-text, bibliographic, and factual databases, enhancing research capabilities. Students and researchers have access to various reputable online scientific databases, including those from American Chemical Society, American Physical Society, IoP, Royal Society of Chemistry, Emerald, Taylor & Francis, American Mathematical Society, Annual Reviews, ASME, IEEE, JSTOR, MathScinet, Nature, Science-Direct, SpringerLink, and more. The library subscribes to the premium version of Grammarly, an automated grammar tutor and revision tool, aiding students in writing effective and error-free documents. It also offers a Plagiarism Checking Service using the "Turnitin" web tool, particularly beneficial for Ph.D. and M.Tech by Research students. The provision of remote access to e-resources and a dedicated mobile app adds flexibility for users, allowing them to access valuable information beyond the physical library space.

Library has been fully computerised with integrated web based library management software to Koha, which enables users to search real-time book status and reservations. The library is fully air conditioned with more than 1000 seating capacity. Newly established eLibrary Complex has the State-of-the-Art modern IT facilities with e-Studio for lecture capturing and live streaming facility, 2 Cyber Libraries with 50+ computers to conduct hands-on training, 2 Seminar Halls of 50+ Capacity each, 8 Discussion Rooms, dedicated Research Scholars Section, Digital Reading Rooms, Laptop Zones etc. catering to more than 7000 on campus library users 24X7 along with in-housed cafeteria.

1.6 Disciplines of Study

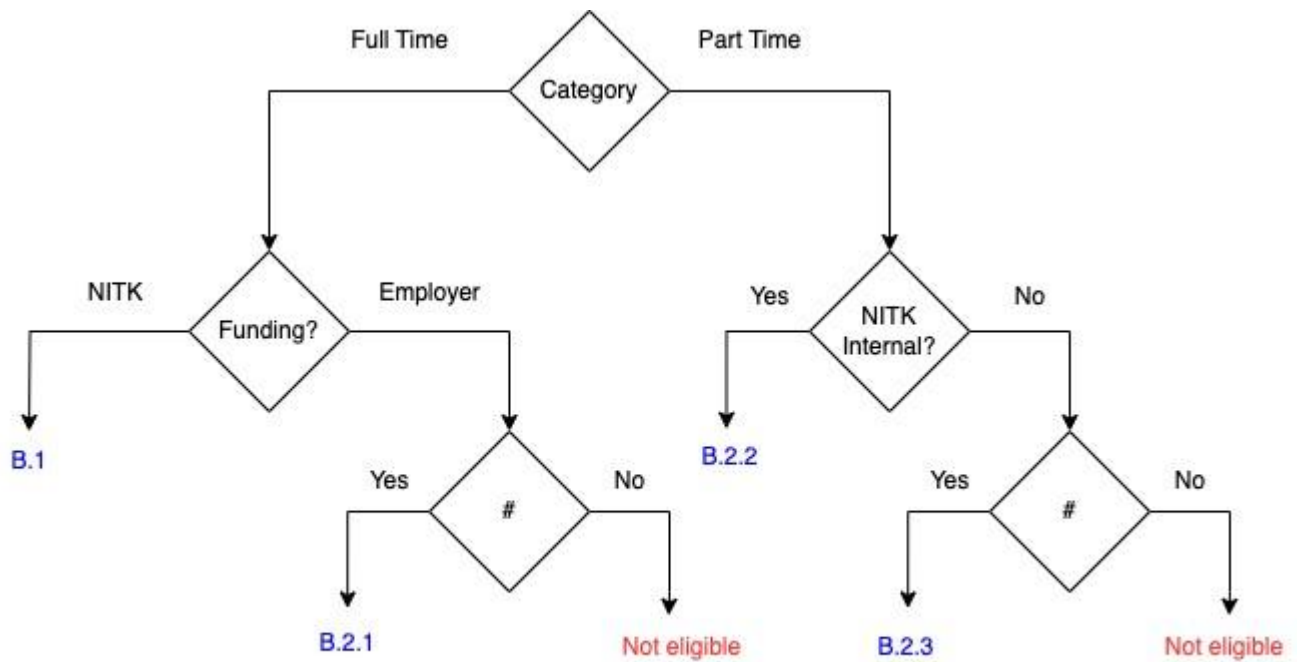
The Institute offers undergraduate programmes in 11 disciplines and 28 post-graduate programmes in specialized areas of engineering. The Institute also offers facilities for research leading to Ph.D. degrees in various branches of Engineering, Science and Humanities & Social Sciences. The academic responsibilities are shared by the following 14 Teaching Departments:

1. Chemical Engineering
2. Chemistry
3. Civil Engineering
4. Computer Science and Engineering
5. Electrical and Electronics Engineering

6. Electronics and Communication Engineering
7. Information Technology
8. Mathematical and Computational Sciences
9. Mechanical Engineering
10. Metallurgical and Materials Engineering
11. Mining Engineering
12. Physics
13. Humanities, Social Sciences and Management
14. Water Resources and Ocean Engineering

2. M.Tech. (R) admissions

2.1. Flow chart for M.Tech. (R) admissions



Are you a regular employee with your current firm/institute for at least past 2 years?

2.2 Guidelines for M.Tech. (R) admissions

B.1 Scholarship seats

B.2 Non-Scholarship seats

B.2.1 Sponsored seats from Industry, Educational Institutes or other organizations (Full time)

B.2.2 Internal Registrants - sponsored institute or project staff of NITK (part time)

B.2.3 External Registrants- sponsored seats from Industry, Educational Institutes or other organizations (part time)

Student of the type **B.1** should possess a valid GATE score and will receive scholarship for the duration of four semesters, which is subjected to scholarship rules of MoE.

The allotment of seats for **B.2** are done based on performance in qualifying examination along with a national level written test and a technical interview, both conducted in physical mode at NITK, with due weightage for each component as decided by the DPGC of the concerned departments.

Student of type **B.2.1** shall be sponsored and financed by the sponsoring organization. They are not entitled for Institute scholarship. The candidate must have minimum of **2 years of full-time work experience** in the sponsoring organization. Along with the application, candidate should produce a sponsorship-cum-clearance certificate in the format provided by NITK.

Student of type **B.2.2** are internal registrants who are sponsored institute or project staff of NITK and are required to produce sponsorship-cum-clearance certificate from the Director, NITK.

Student of type **B.2.3** are sponsored by Industry, Educational Institutes or other organizations and are expected to carry-out their research work in their parent organization after fulfilling certain prerequisites in the Institute. The candidate must have minimum of 2 years of full-time work experience in the sponsoring organization. They may have an additional research guide from the sponsoring organization. Residential requirement may be waived for such candidates and they are expected to complete their course work by opting for certified courses (pre-approved by the DPGC).

A. Minimum qualification/Eligibility for M.Tech. (R) admissions

Admission to a M. Tech. (R) Programme shall be open to Indian nationals who have passed the prescribed qualifying examination with a Cumulative Grade Point Average (CGPA) of at least 6.5 in the 0-10 scale grading system, or not less than 60% marks in the aggregate (taking into account the marks scored in all the subjects of all the public/university examinations conducted during the entire prescribed period for the degree programme). However, this prescribed minimum shall be a CGPA of 6.0 or 55% marks in the aggregate for SC/ST/PwD candidates.

B. List of post graduate programmes in Engineering

The Engineering Departments offering the M.Tech. (R) programme are as follows.

a) Chemical Engineering

- | | | |
|-------------------|---|--------------------------------------|
| i) M.Tech. (CG) | - | Chemical Engineering |
| ii) M.Tech. (ES) | - | Environmental Science and Technology |
| iii) M.Tech. (IB) | - | Industrial Biotechnology |

b) Civil Engineering

- | | | |
|--------------------|---|--|
| iv) M.Tech. (ST) | - | Structural Engineering |
| v) M.Tech. (GT) | - | Geotechnical Engineering |
| vi) M.Tech. (EN) | - | Environmental Engineering |
| vii) M.Tech. (TS) | - | Transportation Engineering |
| viii) M.Tech. (CM) | - | Construction Technology and Management |

(Includes L&T sponsored candidates)

c) Computer Science and Engineering

- ix) M.Tech. (CS) - Computer Science and Engineering
- x) M.Tech. (IS) - Computer Science and Engineering
Information Security

d) Electrical and Electronics Engineering

- xi) M.Tech. (P&ES) - Power & Energy Systems
- xii) M.Tech. (PE&C) - Power Electronics and Control
- xiii) M.Tech. (PV) - Power Electronics and Control for Electric
Vehicle (BGSW sponsored seats only)

e) Electronics & Communication Engineering

- xiv) M.Tech. (VL) - VLSI Design
- xv) M.Tech. (CN) - Communication Engineering and Networks
- xvi) M.Tech. (SP) - Signal Processing and Machine Learning

f) Information Technology

- xvii) M.Tech. (IT) - Information Technology

g) Mathematical & Computational Sciences

- xviii) M.Tech. (CD) - Computational and Data Science

h) Mechanical Engineering:

- xix) M.Tech. (TH) - Thermal Engineering
- xx) M.Tech. (MF) - Manufacturing Engineering
- xxi) M.Tech. (MC) - Mechatronics Engineering.
- xxii) M.Tech. (MD) - Mechanical Design

i) Metallurgical & Materials Engineering

- xxiii) M.Tech. (PT) - Materials Process Technology
- xxiv) M.Tech. (ML) - Materials Engineering
- xxv) M. Tech. (NT) - Nanotechnology

j) Mining Engineering

- xxvi) M.Tech. (RT) - Rock Excavation Technology and
Management. [M.Tech (Research) only]

k) Water Resources and Ocean Engineering

xxvii) M.Tech. (MS)	-	Marine Structures
xxviii) M.Tech. (WR)	-	Water Resources Engineering and Management
xxix) M.Tech. (GF)	-	Geoinformatics

C. Qualifying Examinations for M. Tech. (R) admissions

Departments, Specialization offered and Qualifying Examinations for M.Tech. (Research) are listed below and as per the recommendation of the DPGC of the respective departments.

S.N	Department	Specialization	Qualifying Examination
1.	Chemical Engineering	Chemical Engineering	i) B.E. / B.Tech. in Chemical Engg / Polymer Technology / Ceramic and Cement Technology / Environmental Engineering/ Instrumentation and Control/ Bio-Chemical Engineering / Biotechnology / Petrochemical Engg ii) AMIE (Chemical Engineering) / A.M.I.I.Ch.E.
2.	Chemical Engineering	Environmental Science & Technology	i) B.E. / B.Tech. in Chemical Engineering / Mechanical Engineering / Civil Engineering/ Mining Engineering / Polymer Technology / Ceramic and Cement Technology / Environmental Engineering / Bio-Chemical Engineering / Biotechnology / Petrochemical Engineering ii) AMIE (Chemical Engineering) / A.M.I.I.Ch.E.
3.	Chemical Engineering	Industrial Biotechnology	i). B.E. / B.Tech. in Biotechnology/Chemical Engineering/ Biochemical Engineering/ Bioprocess Engineering/ Food Technology ii). M.Sc. in Biotechnology/ Food Technology
4.	Civil Engineering	Structural Engineering	i) B.E. / B.Tech / B.Sc.(Engineering) in Civil Engineering /Structural Engineering of any Recognised Indian Universities. ii) AMIE in Civil Engineering.
5.	Civil Engineering	Geotechnical Engineering	i) B.E. / B.Tech / B.Sc.(Engineering) in Civil Engineering of any Recognised Indian Universities. ii) AMIE in Civil Engineering.
6.	Civil Engineering	Environmental Engineering	i) B.E. / B.Tech / B.Sc.(Engineering) in Civil Engineering / Chemical/Mechanical / Metallurgical / Mining Engg / Environmental Engg / Bio-Chemical Engineering / Bio- Technology / Agricultural Engg / Biological Science and Bio-Engg / Bio-Sciences & Bio- Engg / Bio-Tech Engineering / Bio Technology & Bio-Chemical Engineering / Chemical & Bio Engineering / Chemical Technology / Civil & Water Management / Civil Engg (Public Health Engg) / Civil Environmental Engg / Environment & Pollution Control / Environmental Science & Engineering / Environment Science and Technology Health Science & Water Engg / Mining Technology / Paper & pulp Engineering / Pulp Technology / Sugar Technology / Water Management / Bio-Engg / Chemical & Bio Engg / Bio-Chemical & Biotechnology Engineering.

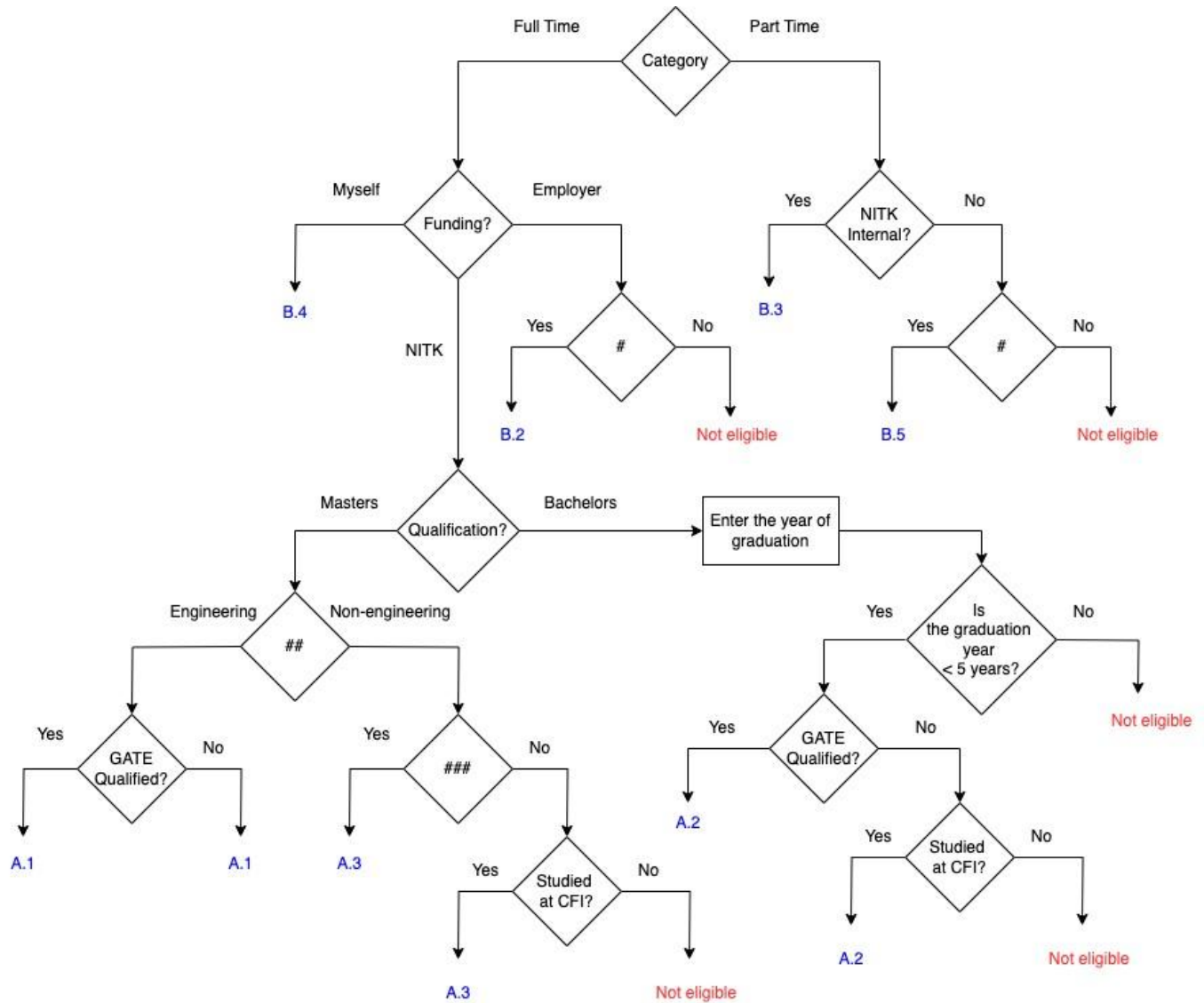
			<p>ii) AMIE in Civil Engineering/Chemical Engineering</p> <p>iii) MSc in Applied Chemistry / Earth Sciences / Environmental Sciences / Industrial Chemistry / Life Science / Bio-Chemistry / Bio-Technology.</p>
7.	Civil Engineering	Transportation Engineering	<p>i) B.E. / B.Tech / B.Sc.(Engineering) in Civil Engineering / Highway Engg / Transportations Engg / Civil & Transportation Engineering / Civil & Transportation Technology of any recognised Indian University</p> <p>ii) AMIE in Civil Engineering</p>
8.	Civil Engineering	Construction Technology and Management	<p>i) B.E. / B.Tech. / B.Sc (Engineering) in Civil Engineering / Civil Engg & Planning / Construction & Project Management / Construction Engineering / Construction Engineering Management / Construction Technology / Construction Technology and Management / Mining Engineering / Transportation Engineering / Environmental Engg / Structural Engineering of any recognized Indian University.</p> <p>ii) AMIE in Civil / Mining Engineering.</p> <p>iii) Bachelors' degree in Architecture (B.Arch. / B.E. or B.Tech. in Architecture of any recognized Indian University).</p>
9.	Computer Science and Engineering	Computer Science & Engineering	B.E/B.Tech in Computer Science and Engineering / Computer Engineering / Computer Science / Artificial Intelligence & Machine Learning / Data Science / Information Technology / Information Science with a valid GATE in CS .
10.	Computer Science and Engineering	Computer Science & Engineering - Information Security	B.E/B.Tech in Computer Science and Engineering / Computer Engineering / Computer Science / Artificial Intelligence & Machine Learning / Data Science / Information Technology / Information Science with a valid GATE in CS .
11.	Electrical & Electronics Engineering	Power and Energy Systems	<p>i) B.E. / B.Tech. / B. Sc (Engg) in Electrical Engineering or Electrical & Electronics Engineering</p> <p>ii) AMIE in Electrical Engineering</p>
12.	Electrical & Electronics Engineering	Power Electronics and Control	<p>i) B.E. / B.Tech. / B. Sc (Engg) in Electrical Engineering or Electrical & Electronics Engineering</p> <p>ii) AMIE in Electrical Engineering</p>
13.	Electronics & Communication Engineering	VLSI Design	<p>i) B.E. / B.Tech. / B.Sc. (Engineering) in E&C, Electronics & Telecommunications / Instrumentation Technology / E&E / Computer Science & Engineering / Electronics / Telecommunication / Electronics & Control / Biomedical Engineering/Medical Electronics.</p> <p>ii) AMIETE (Electronics & Telecommunication)</p>
14.	Electronics & Communication Engineering	Communication Engineering and Networks	<p>i) B.E. / B.Tech. / B.Sc. (Engineering) in E&C, Electronics & Telecommunications.</p> <p>ii) AMIETE (Electronics & Telecommunication)</p>

15.	Electronics & Communication Engineering	Signal Processing and Machine Learning	<p>i) B.E. / B.Tech. / B.Sc. (Engineering) in E&C, Electronics & Telecommunications / Instrumentation Technology / E&E / Computer Science & Engineering / Electronics / Telecommunication / Electronics & Control / Biomedical Engineering/Medical Electronics/Information Science/ Information Science and Engineering/Information Technology.</p> <p>ii) AMIETE (Electronics & Telecommunication)</p>
16.	Information Technology	Information Technology	<p>i) B.Tech/ B.E (Any branch), M.Sc(CS/IT) and Allied branches, M.Sc(Math) / M.Sc(Stat) / M.Sc(Data Science) / MCA with valid GATE score in CS/IT or Data Science and AI.</p> <p>ii) AMIE in Computer Science & Engineering (by Examination)</p> <p>iii) AMIETE in Computer Science & Engineering and Information Technology (by Examination)</p>
17.	Mathematical & Computational Sciences	Computational and Data Science	B.E./B.Tech in any branch/4 year B.S./B.Sc (Engineering/Research) with Mathematics as one of the subjects, or M.Sc. in (Mathematics/ Statistics/Physics/Computer science/IT/Information Science/Electronics or M.C.A.(Master of Computer Applications).
18.	Mechanical Engineering	Thermal Engineering	B.E. / B.Tech. / AMIE) in Mechanical Engineering / Automobile Engineering / Aeronautical Engineering / Aerospace Engg / Energy System Engg / Marine Technology / Power Plant Engg / Renewable Energy Engineering / Chemical Engg.
19.	Mechanical Engineering	Manufacturing Engineering	B.E. / B.Tech. / AMIE in Mechanical Engineering / Industrial Engineering / Industrial and Production Engineering / Industrial Engineering and Management / Manufacturing Engineering / Production Engg / Tool Engineering
20.	Mechanical Engineering	Mechatronics Engg	<p>i) B.E / B. Tech / AMIE in Mechanical Engineering</p> <p>ii) B.E / B. Tech / AMIE in Electronics & Comm. Electrical & Electronics, Instrumentation. Control Engg / Electronics & Instrumentation Engineering</p> <p>iii) B.E / B. Tech / AMIE in Mechatronics / Industrial Production / Production Engg / Manufacturing Engg / Industrial Engg / Aeronautical Engg, Automobile Engg,.</p>
21.	Mechanical Engineering	Mechanical Design	B.E / B. Tech / AMIE in Mechanical Engineering, Automobile Engg, Manufacturing Engineering, Aeronautical Engineering/Aerospace Engineering, Production Engineering
22.	Metallurgical & Materials Engineering	Materials Process Technology	<p>i) B.E. / B.Tech. / B.Sc.(Engineering) in Metallurgical Engineering / Industrial & Production Engg / Metallurgy / Metallurgical & Materials Engineering / Metallurgical Engg & Materials Science / Metallurgical & Materials Technology / Mechanical Engg / Chemical Engg / Production Engineering / Ceramics Engineering.</p> <p>ii) AMIE in Metallurgical Engineering / Mechanical Engineering (by Examination)</p> <p>iii) Associate Member of the Indian Institute of Metals (by examination) -A.M.I.I.M.</p> <p>iv) M.Sc. Chemistry (Physical / Analytical / Industrial / Applied Inorganic), M.Sc. (Materials Science)</p>

			v) Master Degree in Mineral Beneficiation / Mineral Processing / Ore Dressing.
23.	Metallurgical & Materials Engineering	Materials Engineering	<p>i) B.E./B.Tech./B.Sc Engineering in Metallurgy / Mechanical Engineering / Chemical Engineering / Industrial Production / Polymer Technology / Ceramic & Cement Technology / Manufacturing Engineering / Industrial & Production Engg / Metallurgical & Materials Engineering / Metallurgical Engineering / Metallurgical Engg & Materials Science / Polymer Science & Technology / Polymer Science & Rubber Technology / Metallurgy & Materials Technology / Production Engineering.</p> <p>ii) AMIE in Mechanical / Metallurgical Engineering by exam.</p> <p>iii) AMIIM (by examination) of Indian Institute of Metals.</p> <p>iv) M.Sc (Materials Science / Physics / Chemistry (Physical / Analytical / Industrial / Applied / Inorganic))</p>
24.	Metallurgical & Materials Engineering	Nanotechnology	<p>i) B.Tech. in Nanotechnology</p> <p>ii) M. Sc. In Physics, Chemistry, Materials Science, Bio-Technology, Nanoscience / Nanotechnology</p> <p>iii) B. Tech / AMIE in Civil, Mechanical, E & E, E & C, Instrumentation, Chemical, Metallurgy, Mining Engineering, Metallurgical & Materials Engineering.</p> <p>iv) Associate member of the Indian Institute of Metals (by examination) – AMIIM.</p>
25.	Mining Engineering	Rock Excavation Technology & Management [M.Tech (Research) only]	B.E/B.Tech/AMIE in Mining Engineering
26.	Water Resources and Ocean Engineering	Marine Structures	<p>i) B.E. / B.Tech in Civil Engineering / B. Sc (Civil Engg) / B.E / B.Tech Ocean Engineering</p> <p>ii) AMIE in Civil Engineering</p>
27.	Water Resources and Ocean Engineering	Water Resources Engineering and Management	<p>i) B.E. / B.Tech in Civil Engg / B. Sc (Civil Engg)</p> <p>ii) BE Water Management</p> <p>iii) AMIE in Civil Engineering</p>
28.	Water Resources and Ocean Engineering	Geo-informatics	<p>i) B.E. / B. Tech or B.Sc (Engineering) in Civil Engineering</p> <p>iv) AMIE in Civil Engineering</p>

3. Ph.D. Admissions

3.1 Flow chart for Ph.D. Admissions



Are you a regular employee with your current firm/institute for at least past 2 years?
 ## Do you have Masters in an engineering degree (M.E./M.Tech) or a non-engineering degree (M.Sc /M. A/MCA/MBA)?
 ### Are you GATE/UGC-NET/CSIR /NBHM/DAE-JEST qualified?

3.2 Guidelines for Ph.D. Admissions

A. Scholarship seats

A.1 Candidates with M.E. /M. Tech. or equivalent degree with/without GATE

A.2 Candidates with B.E. /B. Tech. or equivalent degree with/without GATE

A.3 Candidates with M.Sc. /M. A./M.C.A./M.B.A. or Master's degree in any relevant discipline with/without GATE/UGC-NET/CSIR /NBHM/DAE-JEST.

B. Non-Scholarship seats

B.1 QIP seats (Full time)

B.2 Full time - Sponsored seats from Industry, Educational Institution or other organizations

B.3 Internal Registrants- sponsored Institute or Project staff of NITK (part time)

B.4 Full time Non –sponsored/non-scholarship

B.5 External registrants - Sponsored seats from Industry, Educational Institution or other organizations (part time)

For all Ph.D admissions under all categories (scholarship and non-scholarship), candidate should qualify the national level written test and a technical interview, both conducted by the respective DRPC of the concerned departments in physical mode at NITK.

For scholarship seats under **A.1**, candidates with M.E./M.Tech. or Equivalent degree as the qualifying degree are eligible with/without GATE score.

Scholarship seats under **A.2**, are direct admission for candidates with B.Tech./B.E./B.Arch./B.Plan./B.Des./B.S. (Four year degree programme) in relevant discipline within five years of obtaining the qualifying undergraduate degree. Such candidates must possess a qualifying GATE score. However, the candidates who have obtained their undergraduate degree from a centrally funded Institute are exempted from the mandatory requirement of a qualifying GATE score.

For scholarship seats under **A.3**, candidates with M.Sc./M.A./M.B.A./M.C.A./Master's degree in any other relevant discipline must possess a qualifying GATE score/UGC-NET/CSIR /NBHM/ DAE-JEST. However, the candidates who have obtained their M.Sc./M.A./M.B.A./M.C.A./ Master's degree in any other relevant discipline from a centrally funded Institute are exempted from the mandatory requirement of a qualifying GATE score/UGC-NET/CSIR/ NBHM/DAE-JEST.

Under non-scholarship seat, students of type **B.1** are admitted under quality improvement programme (QIP), being implemented and monitored by All India Council for Technical Education. Under "QIP", only sponsored teachers who are permanent faculty members of AICTE recognized degree/diploma level colleges are eligible to apply.

Under non-scholarship seat, students of type **B.2** are sponsored and financed by the sponsoring organization. The candidate must have minimum of 2 years of full-time work experience in the sponsoring organization. Candidate should produce a sponsorship-cum-

clearance certificate in the format provided by NITK, along with the application.

Student of the type **B.3** are internal registrants who are sponsored institute or project staff of NITK and are required to produce a sponsorship-cum-clearance certificate from the Director, NITK.

Under non-scholarship seats, **B.4** are full time Non –sponsored type of students. The number of admissions under this shall be restricted to the number of vacant seats in type A, against the sanctioned intake.

Under non-scholarship seat, students of type **B.5** are external registrants, sponsored by industry/Educational Institution. The candidate must have minimum of 2 continuous years of full-time work experience in the sponsoring organization/Institution. Candidate should produce a sponsorship-cum-clearance certificate in the format provided by NITK, along with the application. Candidates are expected to carry-out their research work in their parent organization after fulfilling certain prerequisites in the Institute and may have an additional Research Guide from the sponsoring organization. Residential requirement may be waived for such candidates and they are expected to complete their course work by opting for (pre-approved by DRPC) certified courses.

C. Minimum qualification/Eligibility for Ph.D. Admissions

- i) Admission to Ph.D. Programme shall be open to Indian Nationals with M.E./M.Tech. or equivalent degree with a Cumulative Grade Point Average (CGPA) of at least 6.0 in the 0-10 scale grading system, or not less than 60% marks in the aggregate (taking into account the marks scored in all the subjects of all the public/ university examinations conducted during the entire prescribed period for the qualifying degree) or a CGPA of 5.5 or 55% marks in the aggregate for SC / ST / PwD candidates.
- ii) **Direct admission** to Ph.D. Programme shall be open to Indian Nationals with B.Tech./B.E./B.Arch./B.Plan./B.Des./B.S. (Four year degree programme) in relevant discipline within five years of obtaining the qualifying undergraduate degree. Such candidates should have a qualifying GATE score and a CGPA of at least 8.0 in the 0-10 scale grading system, or not less than 80% marks in the aggregate or a CGPA of 7.5 or 75% marks in the aggregate for SC / ST / PwD candidates (taking into account the marks scored in all the subjects of all the public/ university examinations conducted during the entire prescribed period for the qualifying degree). However, candidates who have obtained the above mentioned undergraduate degree from a **centrally funded Institute** with a CGPA of at least 8.0 in the 0-10 scale grading system or not less than 80% marks in the aggregate, or a CGPA of 7.5 or 75% marks in the aggregate for SC / ST / PwD candidates, are exempted from the mandatory requirement of a qualifying GATE score.
- iii) Admission to Ph.D. Programme shall be open to Indian Nationals with M.Sc./M.A./M.B.A./M.C.A. or master's degree in any other relevant discipline with a CGPA of at least 6.0 in the 0-10 scale grading system, or not less than 60% marks in the aggregate (taking into account the marks scored in all the subjects of all the public/ university examinations conducted during the entire prescribed period for the qualifying degree) or a CGPA of 5.5 or 55% marks in the aggregate for SC / ST / PwD candidates. In addition, the candidate must have a qualifying GATE /UGC-NET/CSIR/NBHM/DAE-JEST. However, Candidates who have obtained the above mentioned master's degree from a **centrally funded Institute** with a CGPA of at least 8.0 in the 0-10 scale grading system or not less than 80% marks in the aggregate or a CGPA of 7.5 or 75% marks in the aggregate for SC /ST / PwD candidates (taking into account the marks scored in all the subjects of all the public/ university examinations conducted during the entire prescribed period for the qualifying degree), are exempted from the mandatory requirement of a qualifying GATE /UGC-NET/CSIR /NBHM/DAE-JEST.

D. Specializations in Ph.D. Programme

Sl. No	Department	Specialization
1	Chemical Engineering	Process Development, Particulate Systems, Environmental Engineering, Transfer Operations, Energy, Process Modelling and Simulation, Computational Fluid Dynamics, Nanosciences/ Nanotechnology, Polymer nanocomposites, Process dynamics and control, and Molecular Simulations, Material Science, Machine Learning and Artificial Intelligence, Biotechnology, Biochemical Engineering, Bioprocess engineering, Computational biology, Food technology/processing, Bio-nanotechnology, Biochemistry, Microbiology, Molecular biology.
2	Civil Engineering	Structural Engineering, Geotechnical Engineering, Transportation Engineering, Construction Technology and Management, Environmental Engineering and Earth Sciences.
3	Computer Science and Engineering	Theoretical Computer Science, Systems, Networks, Data Management, Distributed Computing, AI & ML, Data Analytics, Security, Interdisciplinary research and applications involving Computer Science and Engineering.
4	Electrical and Electronics Engineering	Power and Energy Systems/ Power Electronics and Electric Drives/ Control Systems/ New and Renewable Energy Systems/ Insulation and High Voltage Engineering/ Application of Signal Processing, Artificial Intelligence (AI)/Machine Learning (ML) Algorithms in Electrical Engineering.
5	Electronics & Communication Engineering	Digital, analog and mixed signal design, Advanced computer architectures, Semiconductor devices and modeling, Nano-phonic devices and sensors, 2-D Materials and devices, Digital signal and image processing, Computer Vision, Machine learning, Deep learning and applications, Biomedical signal and image processing, Medical imaging, Medical-clinical-pathological data informatics and decision support systems, radiology and microscopic image processing, Remote sensed image analysis and DIS applications, Photogrammetry, Speech-audio-music video-multimedia information processing. Design synthesis and performance verification of channel codes for flash memory devices, magnetic storage devices, IPV6 protocol, deep space communications and underwater optical communications, RF and microwave engineering, Antenna systems, Artificial electromagnetic surfaces, Millimeter wave and THz circuits and components, Radar signal processing, 5G networks.
6	Information Technology	Affective Computing, Artificial Intelligence, Big Data Analytics, Bioinformatics, Biomedical Imaging, Blockchain Technologies, Cloud/Edge/Fog Computing, Cloud Security, Computer Networks, Cryptography, Computer Vision, Cyber Security, Databases, Data Mining, Deep Learning Applications, Distributed Computing, Evolutionary Deep Intelligence; Future Internet Architecture, Healthcare Informatics, High Performance Computing, Information Retrieval, Information Security, Internet of Things, Mobile Software Engineering, Natural Language Processing, Network Security, Quantum Computing, Quantum Cryptography, Scientific Imaging, Semantic Web Technology, Security Analytics, Social Multimedia/Social Network Analysis, Software Engineering, Spatial Data Analytics, Web Services, Wireless Networks, 5G and Beyond. Candidates with MCA or MS or M.Sc in Mathematics / Statistics / CS / IT / Information Science / AI / ML / Data Science can also apply with valid GATE (CS/DA) / UGC-NET score *Candidates with 1 year PG degree (M.S / M.Tech.) will not be

		considered
7	Mathematical and Computational Sciences (MACS)	<p>Computational Sciences: Artificial Intelligence, Bio-informatics, Block Chain Technology, Cloud Computing, Computer Network Security, Computer Vision, Cryptography, Cyber Security, Deep Learning, Fuzzy Set Theory, Generative AI, Graph Algorithms, Image Processing, Internet of Things, Machine Learning, Medical Imaging, Quantum Computing, Scientific Computing, Wireless Sensor Networks.</p> <p>Mathematics: Algebra, Differential Equations, Dynamical Systems, Fluid Dynamics, Functional Analysis, Graph Theory, Number Theory, Numerical Analysis, Numerical Linear Algebra, Operator Algebras, Operator Spaces, Real Analysis, Reliability Theory, Statistical Inference, Topology.</p>
8	Mechanical Engineering	<p>Renewable Energy, Alternative Fuels, Biofuels and Biorefining, IC Engine & Combustion, Refrigeration and Air-conditioning, Heat Transfer and Bio Heat Transfer, Fluid Dynamics and Micro and Bio fluidics, Fluid Structure Interaction, Propulsion, Turbomachinery, Fracture Mechanics and Fatigue, FEM/CFD, Stress Analysis, Tribology, Machine Dynamics and Vibration, Advanced Materials, Biomaterials and Biomechanics, Advanced Manufacturing, Mechatronics, MEMS, Nanotechnology, Robotics and Control, Product Design, Systems and Bio systems Engineering, Structural Acoustics, Polymer Nano-Composites, Precision Manufacturing, Conditional Monitoring, 3D printing, Vehicle Dynamics, Surface Engineering, Design of Fuel Cells and Electrolysers, Space Technology, and Functional Polymers.</p> <p>Transdisciplinary research areas such as Medical/paramedical/allied health sciences (including specializations in Orthopaedics, sport injury, neurology in rehabilitation, cardio respiratory therapy, paediatrics, women's health, hand therapy, occupational therapy, orthotics, maxillofacial and prosthetics, etc.), drug delivery systems, Agriculture sciences and Engineering, Marine Science, Development of AI/ML models, Operations Research, Applied Mathematics.</p> <p>Qualifying examination: Master's degree in engineering or MBBS with MD or M.Sc. in any science field with NET qualification or MBA with bachelor's degree in engineering/science with GATE/NET qualification.</p>
9	Metallurgical & Materials Engineering	<p>Physical Metallurgy, Mechanical Metallurgy, Extractive Metallurgy, Beneficiation of Minerals, Welding, Surface Engineering, Corrosion, Polymer Nanocomposites, Ceramic and Polymeric Nanofabrics, Energy conversion and storage, Thin films & coatings, Advanced Materials, Heat transfer studies.</p> <p>M.Sc. in Materials Science / Dental Materials / Nanoscience / Physics / Chemistry / Electrochemistry / Applied Chemistry / Industrial Chemistry / Polymer Chemistry / Biochemistry/ Microbiology.</p> <p>B.Tech./M.E./M.Tech. in Metallurgical Engineering / Metallurgical and Materials Engineering / Materials Engineering / Mechanical Engineering / Chemical Engineering / Industrial and Production Engineering / Nanotechnology/Materials Process Technology.</p>
10	Mining Engineering	<p>Rock Mechanics & Ground Control Engineering, Drilling & Blasting, Mine Planning, Environmental Management, Slope Stability, Design and Stability of Civil Excavations, Waste Management, Mineral Beneficiation. Computer Applications in Mining, Mine Health & Safety Engineering</p>
11	Water Resources and Ocean Engineering	<p>Water Resources Engg & Management; Surface Water Hydrology, Ground Water Hydrology, Hydrological modelling,, Artificial Intelligence in water resources, Urban Hydrology, Urban</p>

		water management, Sediment Transport, Ocean and Coastal Engineering, Offshore Renewable Energy, Computational Hydrodynamics, Structural Dynamics, Offshore Engineering, Marine Structures, Isotropic Elasticity in Marine Structure Analysis, Finite Element Analysis of marine and hydraulic structures, Soft computing Applications in Civil Engineering , Geo-informatics Applications in Civil Engineering: Hyperspectral Remote Sensing, Microwave Remote Sensing , Disaster management using advance surveying , GIS and UAV.
12	Physics	Statistical Physics, Active matters, Cosmology and High Energy Physics, Nonlinear Dynamics, Nanomaterials, Supercapacitors and Battery. Quantum field theory and gravity, Optoelectronics, Condensed Matter – Theory and experiment, Multiferroics, Organic and Inorganic Spintronics, Quantum Materials.
13	Chemistry	Inorganic, Materials, Organic and Physical Chemistry M.Sc. / M. Tech in relevant field including M. Pharma
14	School of Management	Strategic Management, International Business, Technology Management, Organizational Behaviour, Human Resource Management, Marketing, Corporate Finance, Capital Markets, Behavioural Finance, Development Economics, International Economics, Agricultural Economics, Rural Development, Applied Econometrics, Operations Management, Information Systems, E-Governance, English and Comparative Literature, and Other related areas. * M.Phil degree will not be considered.

E. Qualifying Examinations for Ph.D.

The prescribed qualifying examination for Ph.D. in Engineering /Technology is Master's degree in relevant field.

Under direct admission to Ph.D., the prescribed qualifying examination is B.Tech./B.E./B.Arch./B.plan./B.Des./B.S. (Four year degree programme) in relevant discipline within five years of obtaining the qualifying undergraduate degree.

For Ph.D. in Physics – Master's degree in relevant field.

For Ph.D. in Chemistry - M.Sc. / M. Tech in relevant field including M. Pharma.

For Ph.D. in MACS–MS / M.Sc in Mathematics / Statistics / Physics / CS / IT /Electronics / Information Science / AI / ML / Data Science or M.Tech / ME in CS / IT / Electronics / Information Science / AI /ML / Data Science or MCA.

For Ph.D. in Humanities, Social Science and Management – Master degree in relevant field, CA along with undergraduate degree.

4. Selection Procedure

- A. M.Tech. (Research):** Selection of candidates for admission will be based upon an evaluation process consisting of following components.

Academic performance in qualifying examination (10% weightage), GATE score (70% weightage), written test (10% weightage) and technical presentation/interview (10% weightage). Candidates with a valid GATE score are entitled to receive the Institute scholarship.

- B. Ph.D.:** Selection of eligible candidates for admission to Ph.D. programme will be based upon the written test with 40% weightage and a technical interview with 60% weightage in the overall evaluation process. Research publications and experience (research/teaching/industry) with 5% weightage each, are part of interview component. Other interview components are technical presentation to assess the research aptitude of the candidate with 10% weightage and technical interview to assess the subject knowledge with 40% weightage. Written test and technical

interview will be conducted by the respective DRPC of the concerned departments in physical mode at NITK.

5. How to Apply:

The Information Bulletin, Seat Matrix and Online Application portal for admission to M.Tech (Research) and Ph.D. programmes are available on the Institute website www.nitk.ac.in. The applicants need to register online with the portal. The registered candidates have to complete Online Application form and pay prescribed application fee, i.e. **Rs 500 (OC / OBC/EWS) and Rs 150 (SC / ST / PwD)** through IRIS portal on or before **10-11-2025 (Monday)**.

The hardcopy of the completed application form with payment receipts and copies of all necessary documents is to be sent to the Assistant Registrar (Academic), National Institute of Technology Karnataka, Surathkal, Srinivasnagar, Mangalore -575 025, Karnataka to reach on or before 14-11-2025 (Friday). "Application for M.Tech (R) or Ph.D Admission in the Department of ..." should be clearly mentioned on top of the envelop.

Candidates sponsored by the Educational Institutions/Industries must get their applications forwarded through proper channel.

Applications which are incomplete / defective / received late are liable to be rejected summarily and no correspondence will be entertained on such applications.

Note: If a candidate desires to apply to more than one course [M. Tech (Research)] / Department (Ph.D.) he / she should submit separate APPLICATION along with Payment Receipt of Application fee for each programme. Candidates called for interview will have to appear for written test and / or interview at their own cost. The written test and / or interview will be held at N.I.T.K., Surathkal on **offline mode**.

6. Calendar of Events for Admission to M.Tech (Research) and Ph.D. Programmes (2025-26, Winter Session).

Opening of Application Portal	08-10-2025 (Wednesday)
Last Date for Online Submission of applications	10-11-2025 (Monday), 23.59 hours.
Last Date for hard copy of applications to reach NITK	14-11-2025 (Friday), 17.00 hours.
Last date for dispatch of call letters (by email only) to short-listed candidates, and announcement in the website by respective departments.	21-11-2025 (Friday)
Selection Test and / or Interview (Offline)	08-12-2025 (Monday) to 10-12-2025 (Wednesday)
Last date for sending recommendations merit list by Departments to the Dean (Academic)	15-12-2025 (Monday)
Publication of provisional selection/merit-list on website by Dean (Academic)	19-12-2025 (Friday)
Online fee Payment, physical reporting for admission and document verification for Selected Candidates	22-12-2025 (Monday) to 26-12-2025 (Friday)
Last Date for sending admission offer letters to wait-listed candidates	29-12-2025 (Monday)
Last Date for physical Reporting, document verification and admission for the wait-listed candidates	30-12-2025 (Tuesday) - 02-01-2026 (Friday)
Class start date	05-01-2026 (Monday)

7. Intake for M.Tech (Research) and Ph.D. Programmes:

A. Intake for M. Tech. (Research) for 2025-26

Category	OC	EWS	OBC-NCL	SC	ST	Total
No. of Seats	17	4	12	7	3	43

B. Intake for Ph.D. Programme for 2025-26: Full time under Institute's Scholarship

Category	OC	EWS	OBC-NCL	SC	ST	Total
No. of seats	33	8	23	13	6	83

OC - Open Category, EWS - Economically Weaker Section, OBC - Other Backward Caste, SC- Scheduled Caste, ST- Scheduled Tribe, PwD – Persons with Disability.

Note:

- Reservation for SC / ST / PwD is as per Central Government rules.
- Reservation of seats for OBC /EWS is as per GOI / MoE norms.
- The above intake is excluding QIP seats allotted by AICTE / MoE and seats earmarked for Indian Navy.

8. Documents to be produced

A. At the time of counselling/written test/interview

- Original marks card of all Semesters/years of Masters /Bachelor's degree
- Date of Birth Certificate in Original (SSLC / X Std.)
- Degree Certificate or Course Completion certificate from college (if qualifying degree exam results are awaiting)
- Caste Certificate if belonging to SC / ST (original)
- EWS Category Certificate as per prescribed format issued by the Competent Authority on or after **1-4-2025**.
- OBC certificate as per prescribed format for OBC candidates. (if applicable) from the Competent Authority issued **on or after 1-4-2025**.
- GATE / NET Score Card (if applicable)
- Sponsorship Certificate, if applicable in the prescribed format given by NITK.
- No objection certificate, if applicable in the prescribed format given by NITK.
- Pass certificate for A.M.I.E. candidates (M Tech.)
- Persons with Disabilities (PwD) certificate, if applicable.
- Relieving certificate from the previous employer, if applicable.

B. Documents to be submitted at the time of admission

1. Admission order issued by Competent Authority.
2. Original marks card of qualifying examinations (First to Final Year) with **two sets** of duplicate copies. (The spelling and order of the name should be same in all the years of marks card, degree certificate and Migration Certificate).
3. Course Completion certificate from college (if qualifying degree exam results are awaiting)
4. Original GATE / NET Score Card (if applicable).
5. Degree Certificate or Provisional Pass Certificate issued by the University.
6. Sponsorship Certificate (if sponsored) in the prescribed format given by NITK.
7. No objection certificate, if applicable in the prescribed format given by NITK.
8. Medical Certificate (general fitness).
9. Relieving Certificate in the case of Sponsored Candidates.
10. Date of Birth Certificate in original (SSLC/ X Std.).
11. Caste Certificate in case of SC / ST.
12. OBC Certificate (if applicable) from the competent authority issued **on or after 1-4-2025**.
13. EWS Category Certificate issued by the Competent Authority **on or after 1-4-2025**.
14. Transfer Certificate.
15. Conduct Certificate.
16. Aadhar card copy.
17. Persons with Disabilities (PwD) certificate, if applicable.
18. Migration Certificate other than Karnataka students.
19. Relieving certificate from the previous employer, if applicable.

Note:

- OBC candidates have to furnish the OBC certificate as per prescribed format. **Candidate can download the prescribed format for OBC Certificate from the NITK website (i.e. www.nitk.ac.in)**
- EWS candidates have to furnish the EWS certificate as per prescribed format. **Candidate can download the prescribed format for EWS Certificate from the NITK website (i.e. www.nitk.ac.in)**
- Sponsored candidates / External registrants should produce a sponsorship certificate / No Objection Certificate in the given format of the Institute.
- Internal Registrants shall produce a No objection certificate from the Director, NITK.

9. Financial Assistance:

A. M. Tech. (Research) Programs – GATE Scholarship

A candidate will become eligible for GATE scholarship in M.Tech (Research) programme on possessing a valid GATE score. Only Indian Nationals are eligible for this scholarship.

A student is eligible to receive GATE scholarship at the rate Rs.12,400/- per month if he / she accepts the following conditions:

- i) It will be obligatory for every post graduate student to undertake 8 to 10 hours (per week) of work related to teaching and research activities as assigned to him / her by the Institute. This could include tutorials, laboratory classes, development and maintenance of laboratories, assistance in research and development activities undertaken by faculty members, maintenance and operation of computers and other central facilities.

A M.Tech. (R) student at any stage should have passed in all the registered courses with a SGPA / CGPA not less than 6.0 in order to be eligible for the continuation of GATE stipend.

FF/FA/N grade in any subject, the scholarship will be stopped till the subject is cleared.

- ii) A student shall be required to give an undertaking to the effect that he/she would not leave the course midway or appear in any competitive examinations, etc, not related to engineering or technology, in order to be eligible to receive this scholarship.

A student receiving the scholarship shall not receive any other emoluments like salary, stipend from any other sources. In no case will the scholarship be allowed for more than 24 months.

Scholarship meant for SC/ST candidates will not be granted to the students under OC / OBC category.

The scholarship holders are governed by the leave rules as prescribed from time to time. If an awardee remains absent for the class / programmes without proper sanction of leave, he/she will be liable to forfeit the scholarship. Leave is sanctioned subject to the conditions stipulated in the leave rules of the Institute

B. Ph.D. Programme

- a) Full time research scholars of type A.1, A.2 and A.3 are eligible for a fellowship of Rs. 37,000/-pm for the first two years and Rs. 42,000/-pm for the remaining two years on satisfactory progress if they qualify in the national level written test and a technical interview, both conducted by the respective DRPC of the concerned departments in physical mode at NITK, Surathkal. Pursuant to the directives of MHRD Government of India, the revision in PhD scholarship will be considered. The Research scholars have to assist in teaching and laboratory work assigned by the department and are eligible for 30 days' vacation leave per year.
- b) Full-time QIP candidates of type B.1, are sponsored teachers who are permanent faculty members of AICTE recognized degree level colleges admitted under QIP scheme.
- c) Full-time sponsored candidates of type B.2 may receive complete financial support including stipend, contingency grants and project expenses from the sponsoring organizations.
- d) Internal Registrants of type B.3, (Institute Faculty / Staff, Project staff) are expected to work for their Ph.D. Programme while fulfilling their normal duties.
- e) B.4 are full time non –sponsored type of students and are not entitled for Institute scholarship. The number of admissions under this shall be restricted to the number of vacant seats in type A, against the sanctioned intake.

- f) Part time students sponsored from Industry/Educational Institutes of type B.5 are expected to carry out their Research work in their parent organization after fulfilling certain pre-requisites in the Institute. They are not entitled for Institute scholarship. The external candidate shall produce a sponsorship and clearance certificate from his employer and submit it along with the application.

C.Sponsored Candidates

- i) The candidates must have a minimum two continuous years of full-time work experience, in the sponsoring organization.
- ii) In case of contract faculty sponsored from other NITs for Ph.D. program, the two year full time work experience requirement is waived.
- iii) Candidate should produce a sponsorship-cum-clearance certificate in the format provided by NITK, along with the application.

10. Fees and Deposits

A. Fee structure for M. Tech. (Research) programme for the year 2025-26

Semester Fees	I Sem. (Rs.)	II Sem. (Rs.)
Tuition fee	35000	35000
OTHER FEE		
Other fee (PART A)#		
Institute Admission Fee	1340	-
Development Fee	2690	2690
Security Deposit (refundable)	6700	-
NITK Alma Mater Endowment Contribution	2690	-
Convocation Fee	3310	-
Other fee (PART B)##		
Library Resource fee	4030	4030
Career Development Fee	2760	-
Health Care Facility	1660	-
Student Activities Fee	6620	-
Campus Amenities	1660	-
Group Insurance Coverage of Students*	1000*	-
Computing Resource Fee	4410	-
Day Scholar Total Fee	73870	41720
Hostel Rent (For Hosteller) (including water/electricity charges) 1st year Boys & Girls (Shared accommodation)	8820	8820
Hosteller Total fee (Shared accommodation)	82690	50540

Students belonging to SC/ST/PwD category are exempted from payment of Tuition fee (Exemption is not applicable to External Registrants and Internal Registrants).

B. Fee structure for Ph.D. programme for the year 2025-26

Semester Fees	I Sem (Rs.)	II Sem (Rs.)
Tuition fee	7500	7500
Other fee (PART A)#		
Institute Admission Fee	2690	-
Development Fee	2690	2690
Security Deposit (refundable)	6700	-
NITK Alma Mater Endowment Contribution	2690	-
Convocation Fee	3310	-
Other fee (PART B)##		
Library Resource fee	4030	4030
Thesis Processing Fee	6000	-
Thesis Evaluation Fees	19000	-
Career Development Fee	2010	-
Health Care Facility	1660	-
Students Activities Fee	6620	-
Campus Amenities	1660	-
Group Insurance coverage of students	1000*	-
Computing Resource Fee	6700	-
Day Scholar Total Fee	74260	14220
Hostel Rent (For Hosteller) (including water/electricity charges) Boys / Girls (Shared accommodation)	8820	8820
Hosteller Total fee	83080	23040

C. Fee structure for Ph.D. internal Registrants. (Only for regular faculty/staff of the Institute) for the year 2025-26

Tuition fee	Rs.5000 per year
Institute Development Contribution	Rs.6000 first year
Alumni Fee	Rs.1000 (one-time payment at the time admission)
Convocation fee	Rs.2000/- (1 st Sem Rs.1000/- & 2 nd Sem Rs.1000/-)
Thesis Evaluation Fees	Rs.5000/- (One time at the time of admission)

Note:

PART A of other fee is the onetime fee to be paid at the time of admission. It will be increased @5% every year for every newly admitting batch of students.

PART B of other fee will be increased @5% every year applicable to all students of all the batches irrespective of their year of admission w.e.f. 2024 -25 admission batch onwards.

*Provisional, subject to revision.

D. Provisional Mess Fees (At Hostel Office) for Hostellers (first semester) for the year 2025-26

1	Admission Fee	1000.00
2	Establishment Charges- Per semester	8100.00
3	Maintenance	3690.00
4	Student Extra Curricular	520.00
5	Mess Advance – Every Semester	22000.00
	Total	35,310.00 Mess Fee structure is tentative subject to revision.

Note: Refund of Fees:

- i) Any student who withdraws admission **before** the closing date of admission for the respective rounds of the Academic Session is eligible for the refund of the all the fees and deposits, after a deduction of a processing fee of Rs.1000 /- (Rupees One Thousand Only).
- ii) Candidates who withdraw the admission **after** the closing date of admission for the respective rounds are eligible for refund of only the security deposit paid to the Institute. They are not eligible for refund of any other fee.
- iii) Candidates who are leaving the course **after joining** are not eligible for the refund of any fee.

Any disputes arising out of admissions shall be subject to Mangalore Court jurisdiction.

Ragging: If any incident of ragging comes to the notice of the authority, concerned accused student shall be given liberty to explain and if his explanation is not found satisfactory, the authority would expel him / her from the institution.
